

Setting up a Recycled Water Program for Success



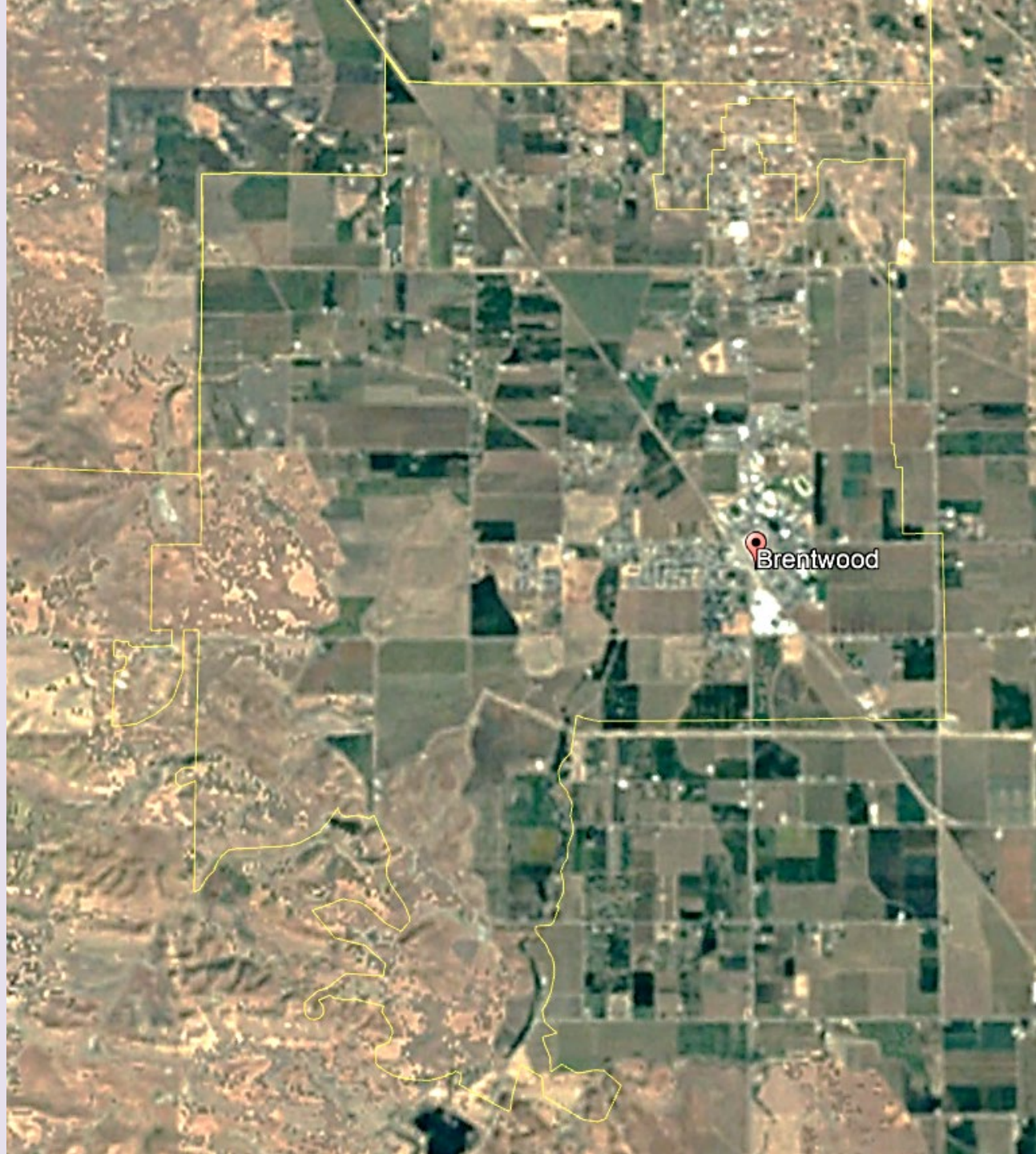
1950

- Population
~1,500



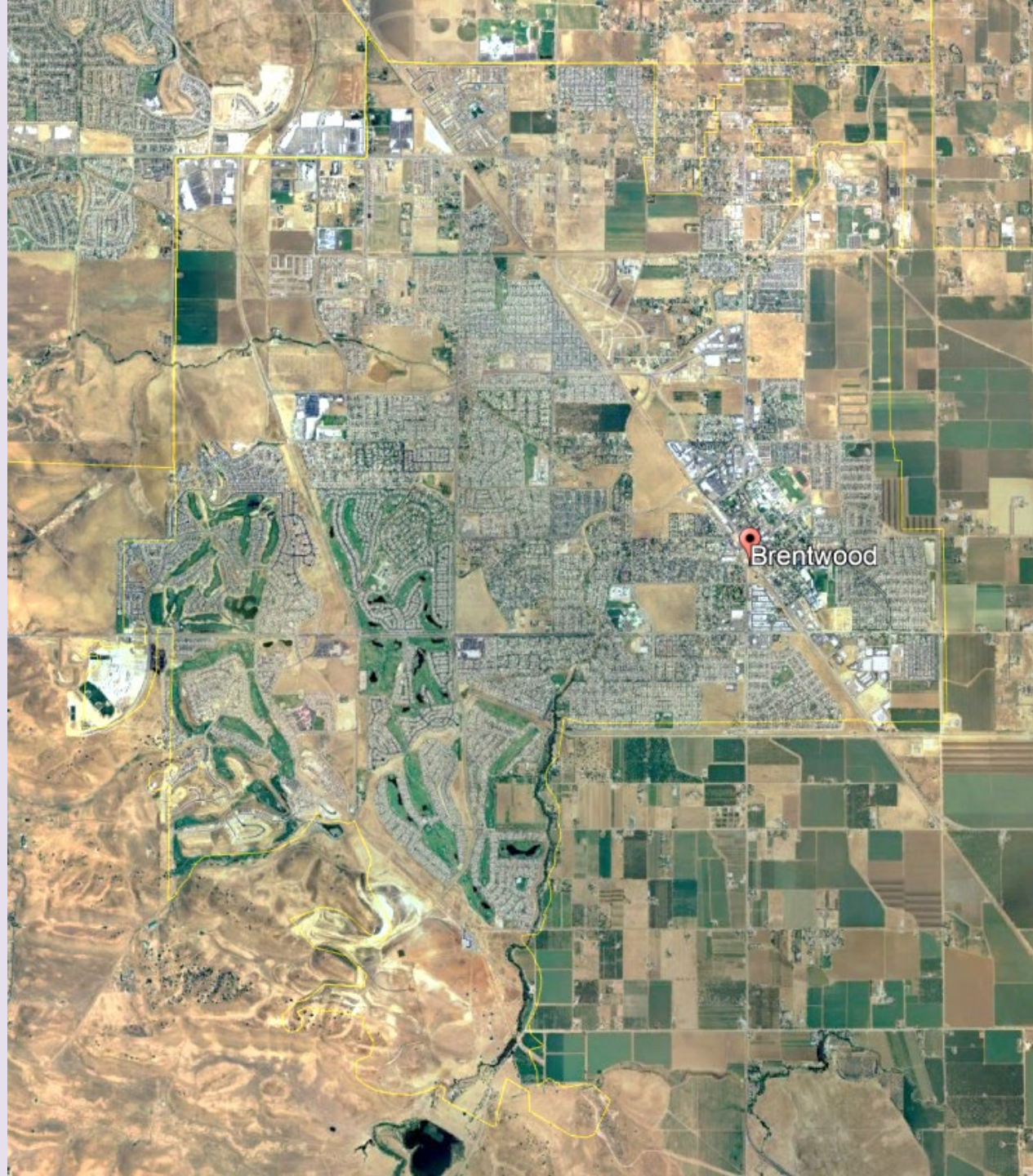
1990

- Population
~7,500



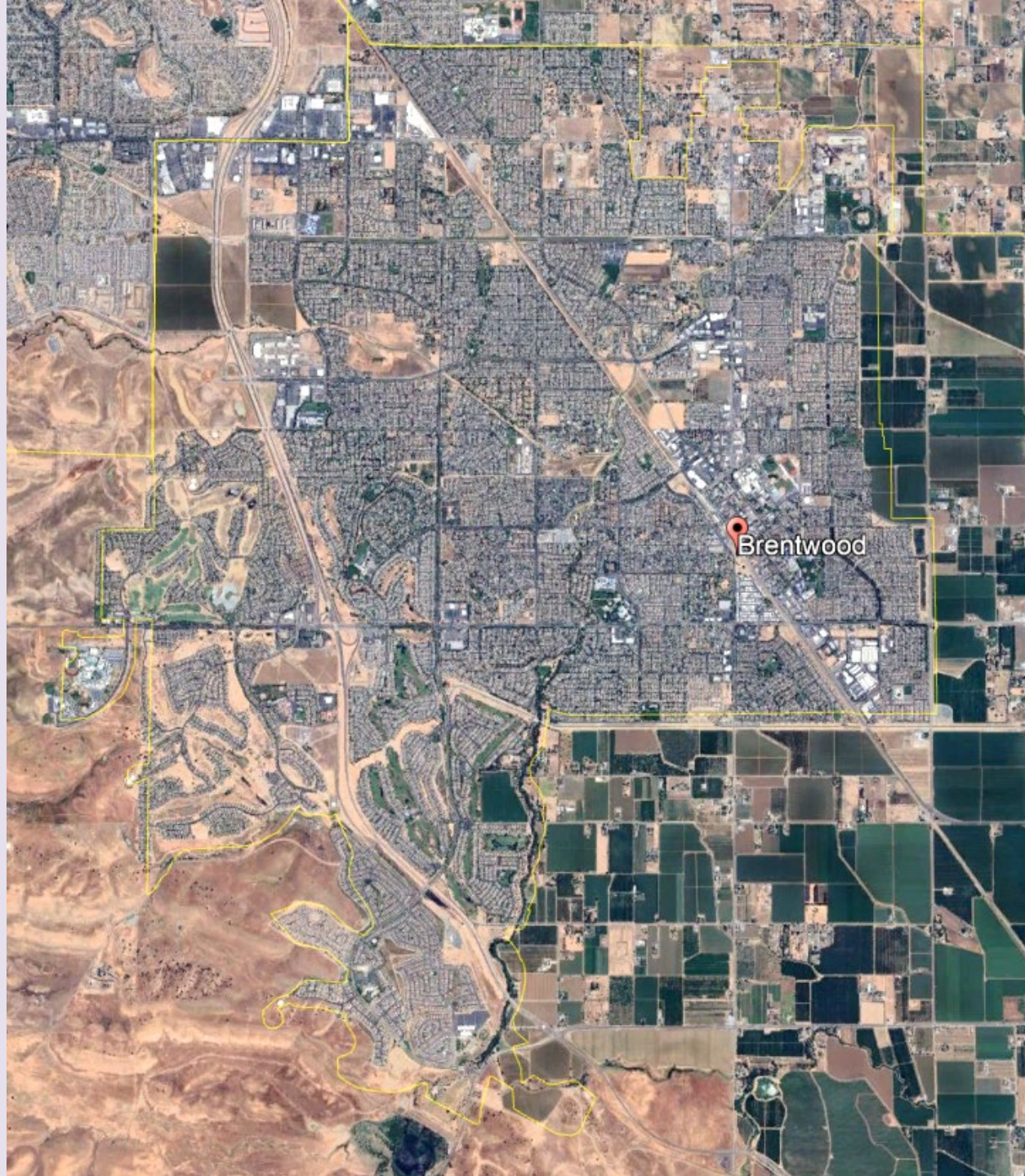
2006

- Population
~47,000



2024

- Population
~65,000



What is Needed for a Successful Recycled Water Program?

1. WWTP that can produce Title 22 approved recycled water
2. Distribution system



WWTP Process Upgrade

- WWTP process needed to be upgraded to produce Title 22 approved recycled water
 - Fund, design, construct and build a new WWTP
 - \$39M, paid for by the City with an SRF loan

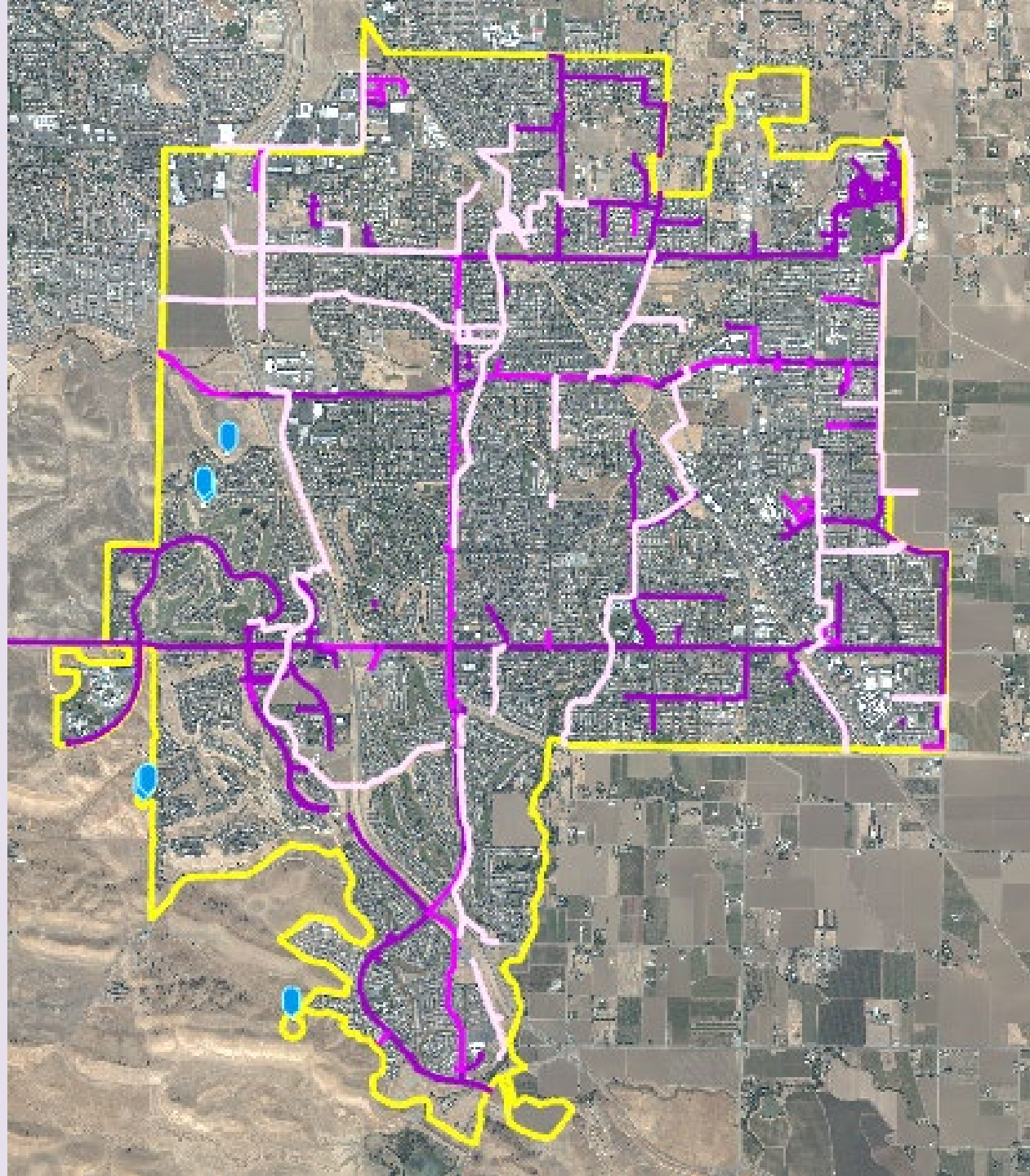


Interim Water Source

- Condition a developer to build a pump station to distribute raw water through purple pipe distribution system



Distribution Infrastructure



Funding

- Development got us started, but how do we keep things green?
- Recycled water distribution costs:
 - Potable water = \$3.18 - \$8.43/1000 gal
 - Recycled water = \$1.08/1000 gal
- Landscaping O&M costs:
 - 100 parks (268 acres)
 - 269 acres of roadway and median landscape
 - Paid by LLD's



Lighting and Landscaping Districts

- LLD fees are collected annually through property taxes
- California law requires an election of all affected property owners to form an LLD
 - Brentwood requires the developer to form the LLD prior to selling lots
- 64 Separate LLD's with a total annual budget of \$11.9M.

Be Adaptable

- Production/storage issue:
 - Work with landscape contractors and users to optimize watering times.

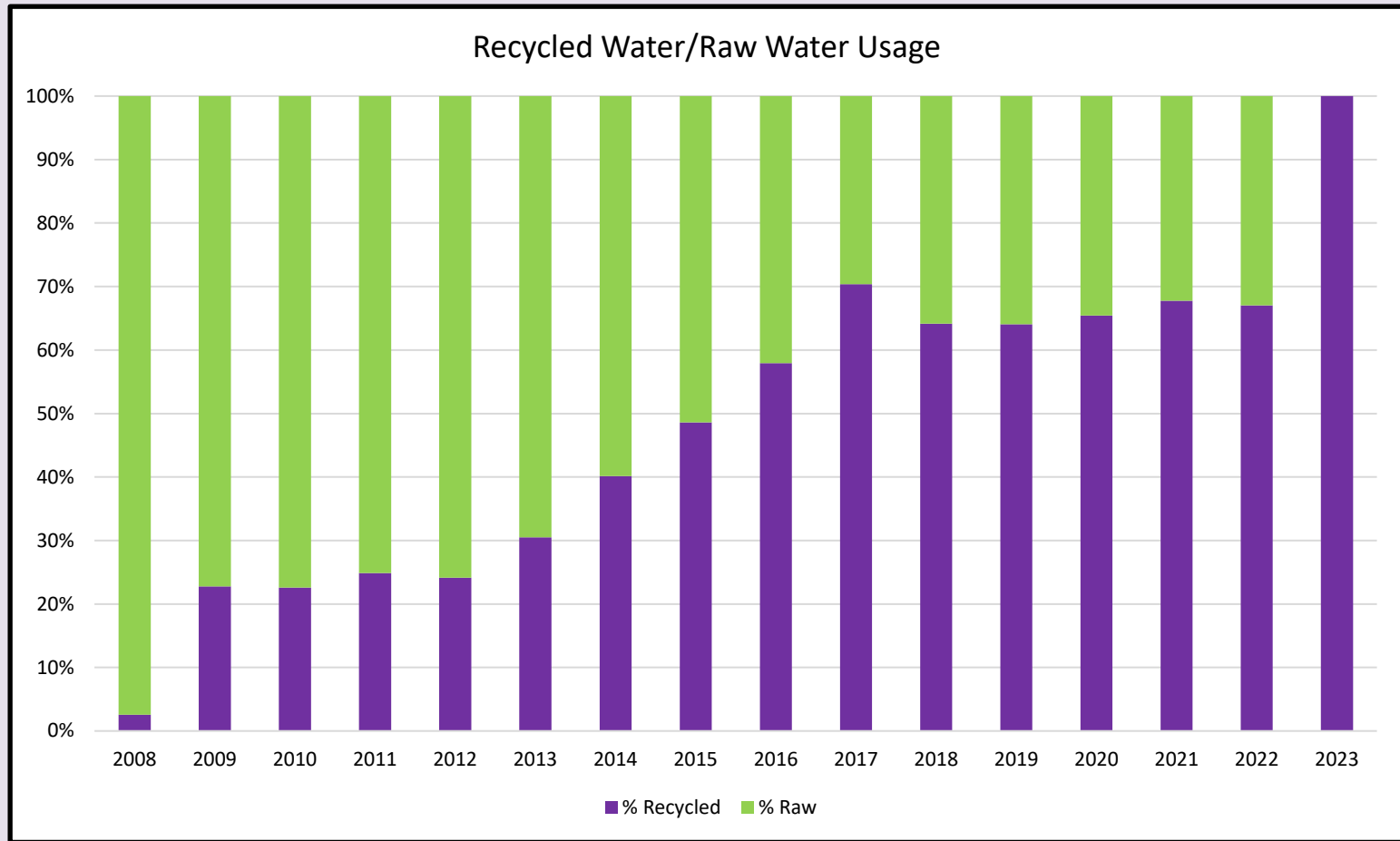


Be Adaptable

- 3 Mgal recycled water storage tank (2017)
- New pump station (doubled capacity)
- Additional booster pump station (2022)



Recycled Water Use History



Drought Response

- Residential Recycled Water Fill Station
 - Open to all residents, requires application and brief training
 - 917 vehicles; 225,000 gal in one day
 - 1,570 registered users
 - 59M gallons distributed



What's Next

- Evaluate additional prospective uses (local golf courses)
- Adding storage and pumping capacity to accommodate high demand across town
 - 1 Mgal storage tank and additional pumps to booster station

Questions?

